

For creativity, learning, design and play

ANNUAL REPORT

2014-2015





WAP SCRAPSTORE ANNUAL REPORT 2014-2015

CONTENTS

OBJECTIVES AND ACTIVITIES	3
ACHIEVEMENTS AND PERFORMANCE:	
CHAIR'S REPORT	4
VOLUNTEERS' REPORT	6
TREASURER'S REPORT AND FINANCIAL REVIEW SUMMARY	8
KEY STATISTICS	12





OBJECTIVES AND ACTIVITIES

PRIMARY AIM

To advance education, in particular by the distribution of donated materials to schools and other charitable institutions established for educational purposes, as set out in our acceptance for charitable status, with the aim of reducing the environmental impact of waste by promoting the re-use of materials.

OBJECTIVES

To provide materials of good quality at reasonable cost, for use through educational and creative activities, in order to expand opportunities:

1. To identify, collect, process and make available to members, clean re-usable materials from local businesses.
2. To enable individual members and their groups within a multicultural community to investigate and develop their own creativity.
3. To recognise and promote the environmental and economic issues of clean, re-usable waste materials and the value in their re-use.
4. To promote and create opportunities for the involvement of a wide range of volunteers.
5. To obtain feedback from the users of the Scrapstore to move activities forward.





CHAIR'S REPORT

It has been another year of positive consolidation, steadily building on the strong base of volunteers and the diverse, generous suppliers of beautiful, useful, sometimes weird and wonderful 'stuff'.

Our main focus is making our members happy and we depend on their continued support. The Scrapstore model can be a bit hard to grasp at first - what we offer to whom and what we stand for. We are primarily here to give unique value to our members - groups, organisations or individuals who can use materials to create something worthwhile with their users. Sometimes members don't know what exactly they will do or how, others have a clear vision. Inspiration comes in many ways and Scrapstore volunteers are there to help. Often the process of creation is as important as the outcome.

Membership numbers have been steadily growing and we have made big efforts to be even more inclusive to different types of members in a wider geographical area. Two start/renew annual membership points has helped. We undertook a satisfaction survey of members and this told us that members were generally satisfied with what we did, but would like us to be open longer hours. We have responded by increasing opening times on Tuesdays and Thursdays; it could be more.

We are starting to offer participation in workshops in the store and by working with partners at outside events. In May 2015, we became significant partners of Wandsworth Arts Fringe.

Our progress has been given a boost by having paid staff again. Chris Bielby came first as office manager and later in the financial year Sascha Taylor started running a project to establish an on-going general manager role. Their contributions have made a great difference to our sustainable future and given a stronger anchor point for the amazing work of our volunteers, on which we depend.

There are always changes; some volunteers and trustees have worked for Work and Play for many years and others give their time for short periods - we understand it has to fit with peoples' lives. We were very sad to lose Elizabeth Bull from illness, a talented and stalwart founding volunteer and former chair. She is greatly missed.

There have been changes of individuals in the trustee team, but a continuity and unanimity of purpose. Susan Poston became a temporary trustee during the turnaround transition and has been able to step down, though she still volunteers. I want to thank her for helping Work and Play in this extra way.

We have started a review of our constitution, with the aim of updating it, rather than make any radical changes to our purpose. Angharad Palin is helping with this. I believe that the trustees, in making decisions about how to achieve the charity's objectives, have had due regard to the Charity Commission's public benefit guidance. So we have kept to the priorities we set ourselves last year and what we are doing seems to be working.

Looking ahead, promotion to grow membership value, numbers and loyalty will still be a priority and we want to focus on finding other sources of charitable funding or sponsorship with partners where we can. While we continue to consolidate, we must keep our eyes open for feasible opportunities to expand, diversify or meet our objectives in different ways. We want to raise awareness of the wider reuse agenda and demonstrate our contribution to it. Our close relationship with Wandsworth Council



remains important for many reasons. We want to finish tidying up our constitution when the promised change in legislation makes the process easy to make changes we need. The general manager project has worked and next year we will need a more embedded employed management structure. This is not straight forward because although we have a healthy bank balance now, going forward we do not have enough reliable income yet to fully fund the employment of the management team we need.

We cannot do any of this without committed volunteers, more are always welcome!

Lucy Hadfield
Chair

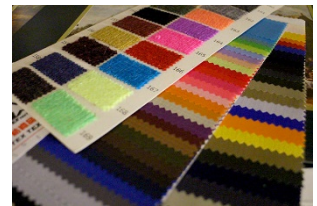


VOLUNTEERS' REPORT

It has been a very busy year for the volunteers at Work and Play. We continue to rely on our volunteers for processing our mountains of donations and for making our store look gorgeous with displays, creative ideas and well-stocked shelves. Volunteers also support us in a number of other ways – it is without question that Work and Play would not survive without our committed volunteers! The volunteer report this year focuses on highlighting the wide variety of contributions from our large workforce and endeavours to name all who help us.

Teresa, Susan, Marie and Rachel continue to provide much-valued support with regard to the look and feel and organisation of the store and the processing of weird and wonderful stuff onto our shelves. Teresa and Susan continue to be a great help with regard to collections – but have been relieved of much of their responsibility in this by Chris our Office Manager who to our relief has taken on the co-ordination and supplies liaison role. We have built a wider team to help with the driving including Jayson, Chris, Sascha and more recently Kayla who loves to drive a van.

We continue to build on our large fabric team which is critical to us as we have a great deal of fabric to process, arriving in many forms: from bin bags to enormous sacks to boxes of scraps affixed to card and huge tents! Hansa, Freyja, Freddie, Olga, Elaine and Doreen all provide important help here.



Catherine has taken on a major role this year, managing our reception on a Thursday (and often on a Tuesday) which has allowed us to open on a second day. We would be really stuck without her support. Catherine has also been key in helping us attend conferences and events by calmly organising displays and craft activities.



Rachel continues to provide help for us with our reception on Tuesdays and Diane continues to play a key role supporting our volunteer 'HR' processes and recruitment. Diane also manages our bottle-top mountain! Shujaat continues to ensure that we get the best deals with our utilities and purchases and that our office equipment is kept virus free. Dave helps with Health and Safety.

Julia has become our bookkeeper, which has allowed Susan to retire from this role (thank you Susan for the years of support). We are grateful for Julia's input.

We have been lucky to continue working with Susanne who has built our social media presence and improved our website. In March we started to employ Susanne on a contract basis to help us with some more focused marketing activities and we look forward to the impact of this work. Many congratulations for securing a role at Work and Play!



Jayson Singh has become our Artist-in-Residence this year. He displays his art-work in the store for us all to enjoy and has developed Rangoli-inspired and sculptural interactive demos which have been a hit with participants. An oil-painter by trade, we are pleased that Jayson has been inspired by our materials to make other stuff.

Freyja is another key artistic influence. Her paper art in particular has been popular with our members and volunteers this year. A big thank you to Freyja for developing a range of interactive demos and sharing these with a variety of our staff, members and visitors. We must also mention Teresa here who continues to amaze us with her clever arts and crafts creations – often using the most unlikely of Work and Play materials: great inspiration.



Did you see our Wishing Tree created by Teresa, out of junk, for the Wandsworth Fringe this year?



Carol has gamely taken on the role of managing our reception display area and has delighted us with a wide range of creative displays, using our stuff to make thought-provoking and fun pieces and exhibits.

Finally, we must mention that we have recruited a number of new helpers and we have been delighted to welcome them and practice our induction process (newly introduced last year) and various policies. New volunteers this year include: Sharon, Collette, Claudia, Kayla, Teresa, Gill and Karin. Welcome to all!

Huge thank you to all volunteers. We need you and we need more for our ongoing success!

Sascha Hebblethwaite

Quotes from volunteers

“Although I've been volunteering here for around 20 years, I still love to come in...why?...the teamwork, the positive atmosphere of the place and the excitement of never knowing what is going to come through the door in terms of supplies.”

“What is great about volunteering here is that the Scrapstore is a very positive and energetic place, and what's most exciting is that you never quite know what you may be asked to do. It's lovely to belong to a reliable, hard-working and friendly team.”



TREASURER'S REPORT AND FINANCIAL REVIEW

2014-15 has been another significant year for the Work & Play charity, as we continued through the execution of our long-term restructuring programme, steadily building on the 2014 momentum.

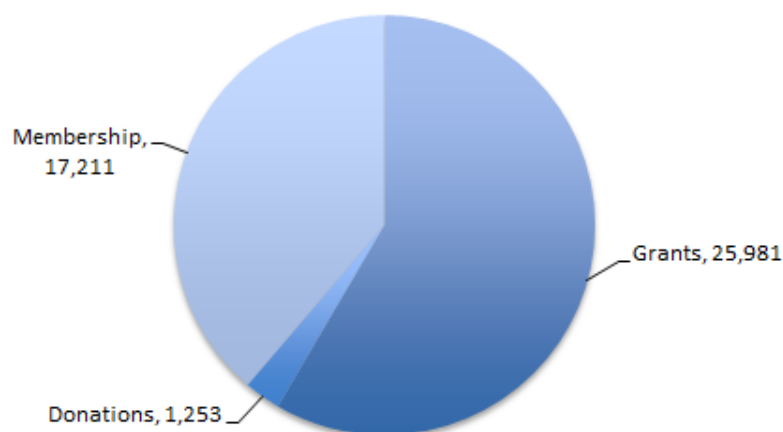
<i>in pound sterling</i>	Total Funds 2015	Total Funds 2014	YoY Change
Total Income	44,395	38,865	5,529
Fundraising Income	25,981	19,715	6,266
Membership	17,211	17,014	197
Donations	1,253	2,137	(884)
Total Expenses	28,175	14,598	13,577
Non-Salary Expenses	15,696	14,598	1,098
Salary Expenses	12,479	-	12,479

Work and Play's total income has improved by 14% to 44,395, mostly on the back of the fundraising activities, which allowed us to upsize the contingency reserve fund to a target £40,000 and employ an office manager in May 2014 as a first step towards re-building the core operational team of at least one office manager and one general manager. However, we are still a long way from comfortably covering costs of employing a permanent team.

We were able to secure £17,055 of grants from the existing donors (Wandsworth Council, Miles Trust and Leathersellers), as well as to attract £8,877 of additional funds from the new/returning benefactors (Garfield Weston, Octavia Trust and Big Society Lottery Fund). This is a 14% year on year improvement of £6,217 in grant revenues. We are very grateful for the generosity of our supporters and sponsors.

Our membership income has improved slightly to £17,253. This was in line with our expectations as Work and Play continued operating without a permanent store manager.

Incoming Funds





Work and Play's operational expenses (excluding salaries) remained at a similar to the last year level at £15, 696, with a slight year on year increase mainly driven by an investment into a much needed upgrade of our web site.

However, we now have a new material cost item related to maintaining the office manager. While still a way off from affording to hire a permanent store manager, it is becoming more crucial than ever to continue improving our income line with more grants and donations, while organically growing the membership base.

I would like to say a tremendous thank you to everyone for their hard work and for standing by the charity throughout a turbulent time. The store has never felt more buzzing with cheerful volunteers, members looking around and all the wonderful supplies that we have on offer!

Evgenia Sorokina
Treasurer

A square image containing a handwritten signature in blue ink, which appears to be 'E. Sorokina'.



Income Profile

<i>in pound sterling</i>	Year Ended March 31 st , 2015			2014	YoY
	Unrestricted	Restricted	Total	Total	Change
Voluntary income					
<i>Grants:</i>					
Octavia Trust	3,000	-	3,000	3,000	-
Miles Trust	-	1,490	1,490	1,650	(160)
Wandsworth Borough Council	6,065	-	6,065	6,065	-
Wandsworth Council Rent (deducted at source)	-	6,500	6,500	6,000	500
Big Society Lottery Grant	-	877	877	-	877
Garfield Weston	-	5,000	5,000	-	5,000
Leathersellers	-	3,000	3,000	3,000	-
<i>Donations:</i>	1,203	-	1,203	2,137	(934)
<i>Other</i>	50	-	50	-	50
Total	10,318	16,867	27,184	21,852	5,332

<i>in pound sterling</i>	Year Ended March 31 st , 2015			2014	YoY
	Unrestricted	Restricted	Total	Total	Change
Members Fees	17,211	-	17,211	17,014	197

Expense Profile

<i>in pound sterling</i>	Year Ended March 31 st		YoY
	2015	2014	Change
Salary	12,479	-	12,479
Advertising & Publicity	665	1,061	(396)
Rent	6,500	6,000	500
Electricity & water (utilities)	866	2,200	(1,335)
Business rates	241	538	(297)
Telephone and broadband	470	413	57
Van, travel and other operational	1,831	1,091	740
Insurance	1,012	1,228	(216)
Office equipment (<£1k)	401	1,067	(665)
Computer Software and web fees	466	78	388
Website migration costs	2,000	-	2,000
General Expenses	939	139	800
Other	301	574	(274)
Total	28,175	14,598	13,577



Designated Funds Profile

Reserves	2015	2014	YoY Change
Operational	25,000	8,000	17,000
Rent	5,000	-	5,000
Staffing	10,000	25,000	(15,000)
Total Reserves	40,000	33,000	7,000
Staff Costs	12,479	-	12,479
Restricted Funds	18,217	7,850	10,367
Total Designated Funds	34,262	25,150	9,112



KEY STATISTICS

Membership:

During the financial year April 2014-March 2015

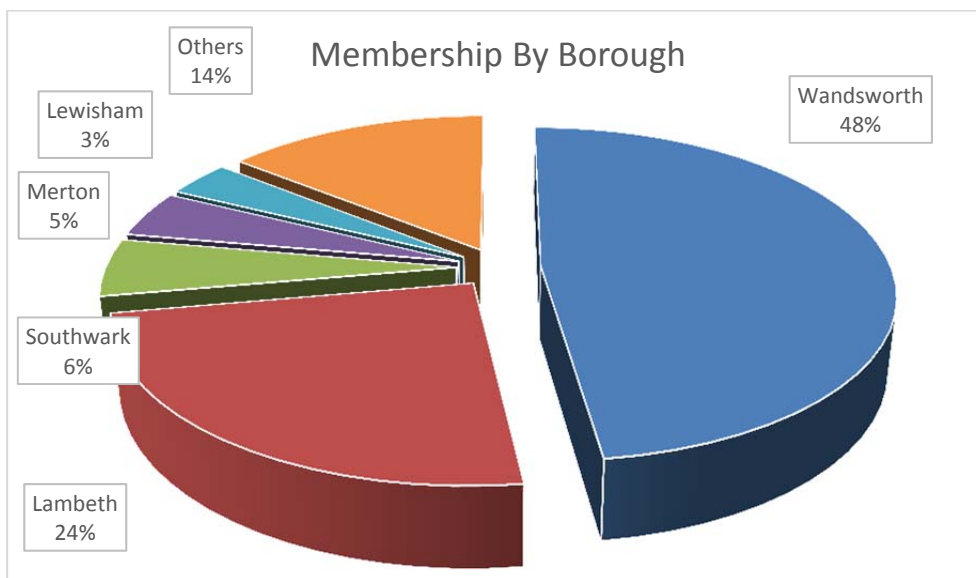
Total membership = 288*

Total end user numbers (approx.) = 24,492

Average number of end users per member (approx.) = 85

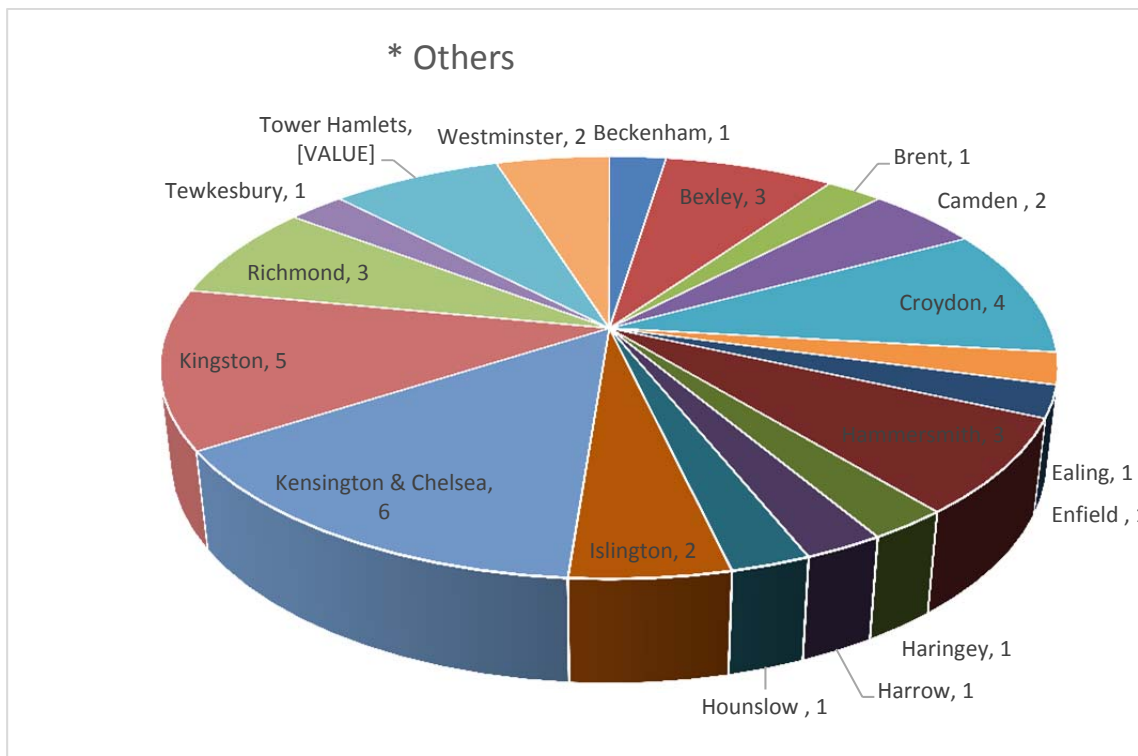
MEMBERSHIP BY BOROUGH	
	Members
Wandsworth	138
Lambeth	70
Southwark	16
Merton	13
Lewisham	10
Others*	41
Total	288

*Includes 71 'proxy members' within 3 umbrella groups



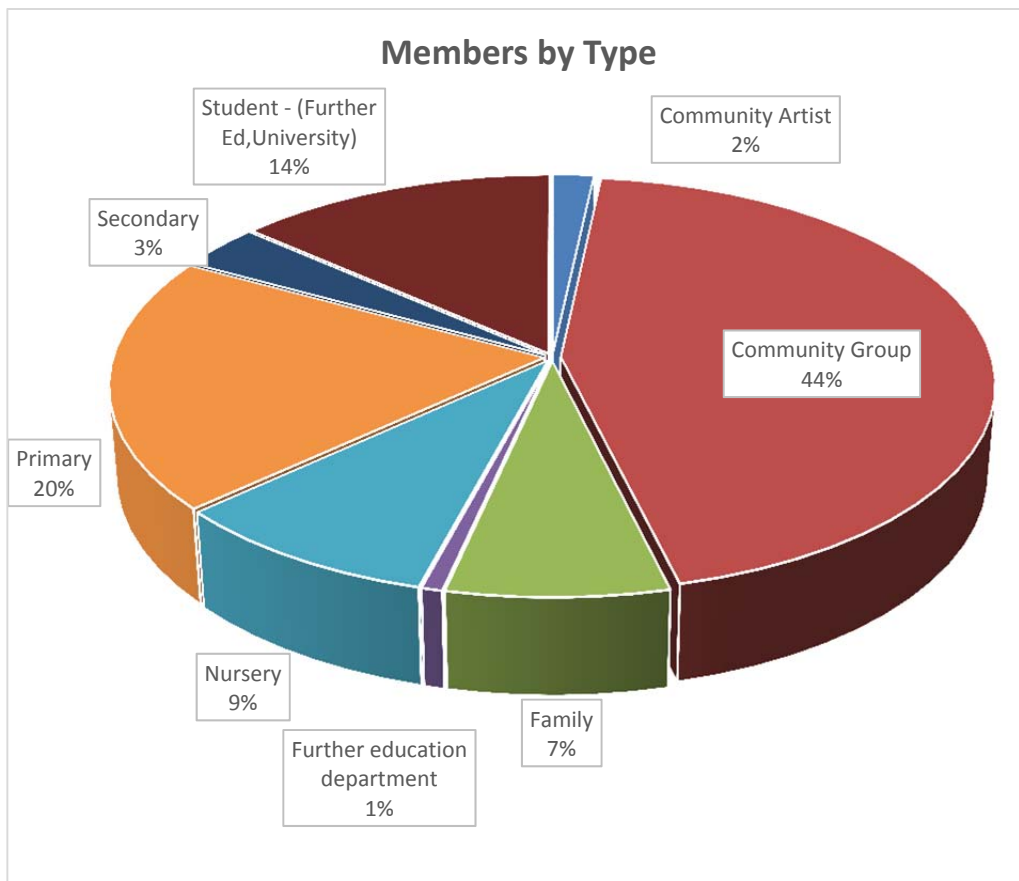


*'Others'	Members
Beckenham	1
Bexley	3
Brent	1
Camden	2
Croydon	4
Ealing	1
Enfield	1
Hammersmith	3
Haringey	1
Harrow	1
Hounslow	1
Islington	2
Kensington & Chelsea	6
Kingston	5
Richmond	3
Tewkesbury	1
Tower Hamlets	3
Westminster	2
Total	41



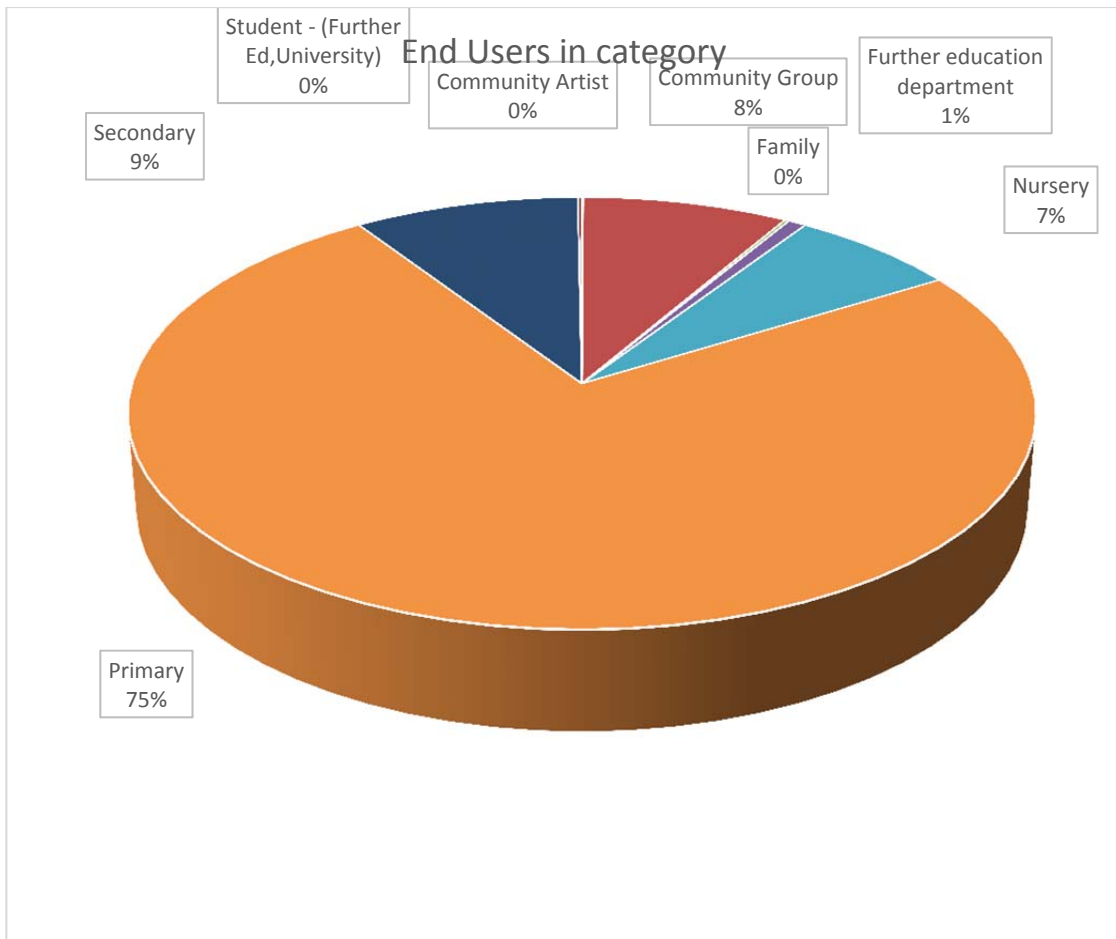


MEMBERSHIP BY TYPE	
Type	Members
Community Artist	5
Community Group	128
Family	21
Further education department	2
Nursery	26
Primary	57
Secondary	10
Student - (FE)	39
	288





End Users by Category	
Type	End Users
Community Artist	13
Community Group	2052
Family	43
Further education department	180
Nursery	1687
Primary	18233
Secondary	2245
Student - (FE)	39
Total	24492





Member Collections:

Collections made by members in the financial year April 2014 – March 2015.

Total estimated value of supplies taken	= £85,164
Total number of discrete collections made	= 950
Average number of collectors per week	= 24
Number of unique collections	= 221

Supplies received and collected:

During the period January 2015 to October 2015*

	Domestic	Commercial	Total
No. of active suppliers	40	55	95
Units (bags) donated	222	826	1048
Collected by WAPS	25	699	724
Delivered by Donor	186	138	324

*Quantitative record keeping was only introduced in January 2015

Volunteers:

During the financial year April 2014-March 2015

Number of regular volunteers	= 21
Number of speed volunteers (NB. Only offered Jan – Mar)	= 3
Total volunteer hours worked in year	= 3762h 35
Average volunteer hours worked per week*	= 75h 25

*50 wks in Period



TRUSTEES DURING THE YEAR

Lucy Hadfield, Chair

Evgenia Sorokina, Treasurer / Company Secretary

Richard Gaskin

Angharad Palin

Susan Poston (resigned)

Sascha Hebblethwaite (resigned)

ACCOUNTS PREPARED BY

Stephen Reid ACA

Work & Play, Hazelhurst Estate, 13 Blackshaw Road, London SW17 0DA

www.workandplayscrapstore.org.uk info@workandplayscrapstore.org 0208 682 4216

Supported by Wandsworth Borough Council, the Leathersellers' Company, Miles Trust,
Garfield Weston, and others.

Charity No 1041641

Company No 2234306